

Bel Alalme Nayha

نحن نعيش بالمعرفة

Ma Te Mātauranga
Ka Ora Ai



We Live By Knowledge

The Fatimah Foundation

We Live By Knowledge - Bel Alalme Nayha Our Dream, Moemoea

**In the dreams, we weave at The Fatimah Foundation,
A world transformed through learning and inspiration,
In intellect and character's gentle formation,
Our moemoea aspires to a higher station.**

**Our journey's path, from East we embrace,
Through Southeast Asia's tapestry and grace,
To Aotearoa, our hearts have found a place,
A home where knowledge finds its space.**

**For learning's power, we hold it dear,
In a changing world, it's crystal clear,
Adaptability and resilience here,
We live by knowledge. Nothing to fear.**

**Inclusive we stand, for all to see,
Diverse traditions and legacy,
In partnership and unity,
Cultural richness, our shared decree.**

**In Truth's light and Tiriti stand,
Belonging and diversity go hand in hand,
Together, we aim to expand,
An inclusive society throughout the land.**

**Our dream, our vision, let it be known,
To inspire and educate, these seeds are sown,
A harmonious society we shall hone,
We Live By knowledge with benevolence,
nurtured and grown.**

*Medjool Mara
Oct 2023*

"Bel Alalme Nayha" is a journey of self-discovery, wisdom, and nature, where you can learn life lessons alongside the characters.

Welcome to our AZ-FatimAR App.
Join us on a wondrous journey of
augmented reality!

SQUARE
BOX



“

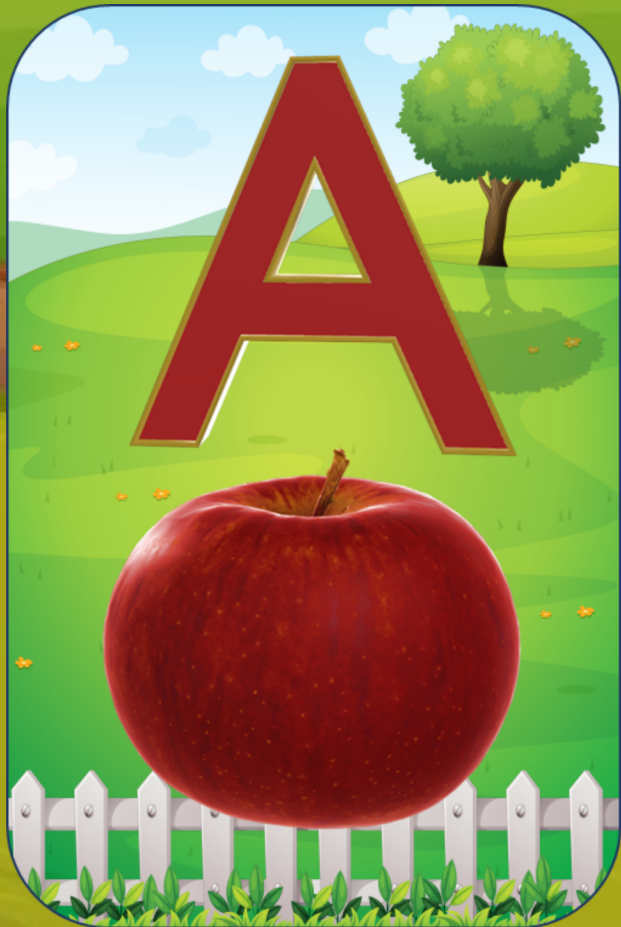
“Education forms the bedrock of cultural preservation, safeguarding the diverse tapestry of traditions, customs, and languages that define our global heritage.” Z.Sokhiry

”

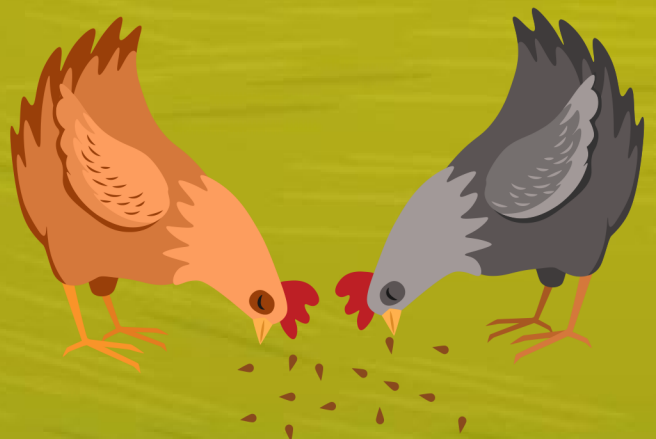




B is for Butterfly. The butterfly has wings. The wings help the butterfly to fly into the blue blue sky.



A is for Apple. The apple grows on the tree. The apple is red.





C is for Cat. Look how cute this cat is with the spots and the cat has whiskers and a long long tail

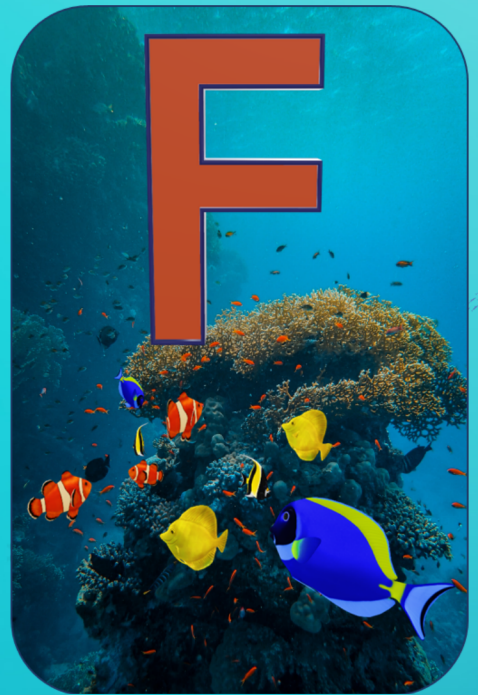


D is for Dog. The dog is Black White and Brown with BIG Floppy Ears and BIG BIG Eyes. Look how happy the dog is!

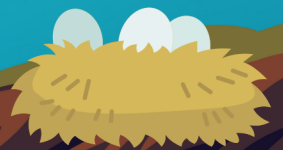




E is for Elephant. The elephant has a BIG long nose and long white tusks. The Elephant is from Asia.



F is for Fish. These fish are Tropical Fish. These fish live in warm water. Can you see Nemo?





G is for Giraffe. The giraffe has long legs so it can run fast and a very long neck so it can eat food from the tree tops.



H is for Hat. The hat is Green. This hat will protect you from the sun the rain and the wind.





J is for Jacket. The jacket is Black and White. The jacket will keep you warm.

I is for Ice-Cream. The ice cream on the stick is covered in chocolate. Mmmmmmm. What's your favourite flavour?

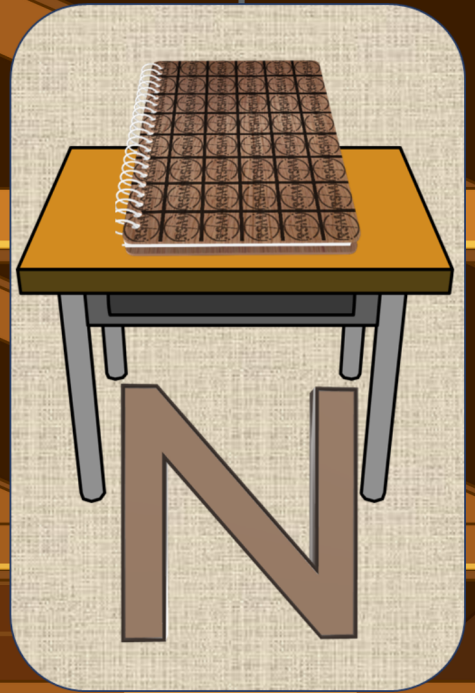
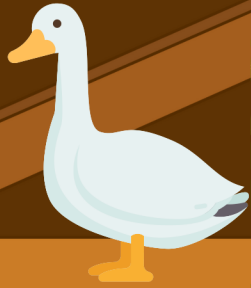




**L is for Lion. The lion
ROARS. The lion is the King
of the jungle.**



**K is for Kettle. This kettle is
in the kitchen. We fill the
kettle to make a hot drink.**



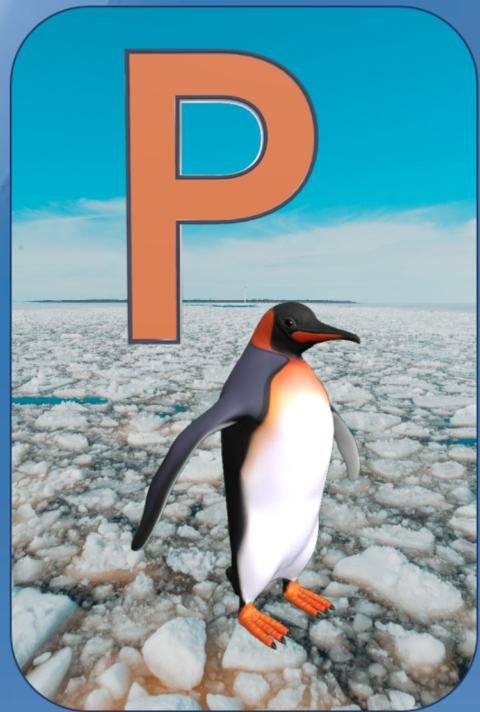
N is for Notebook. The notebook is on the desk. We write notes and draw pictures in our notebook.

M is for Mouse. The mouse has a long tail. The mouse is Brown and runs very fast.

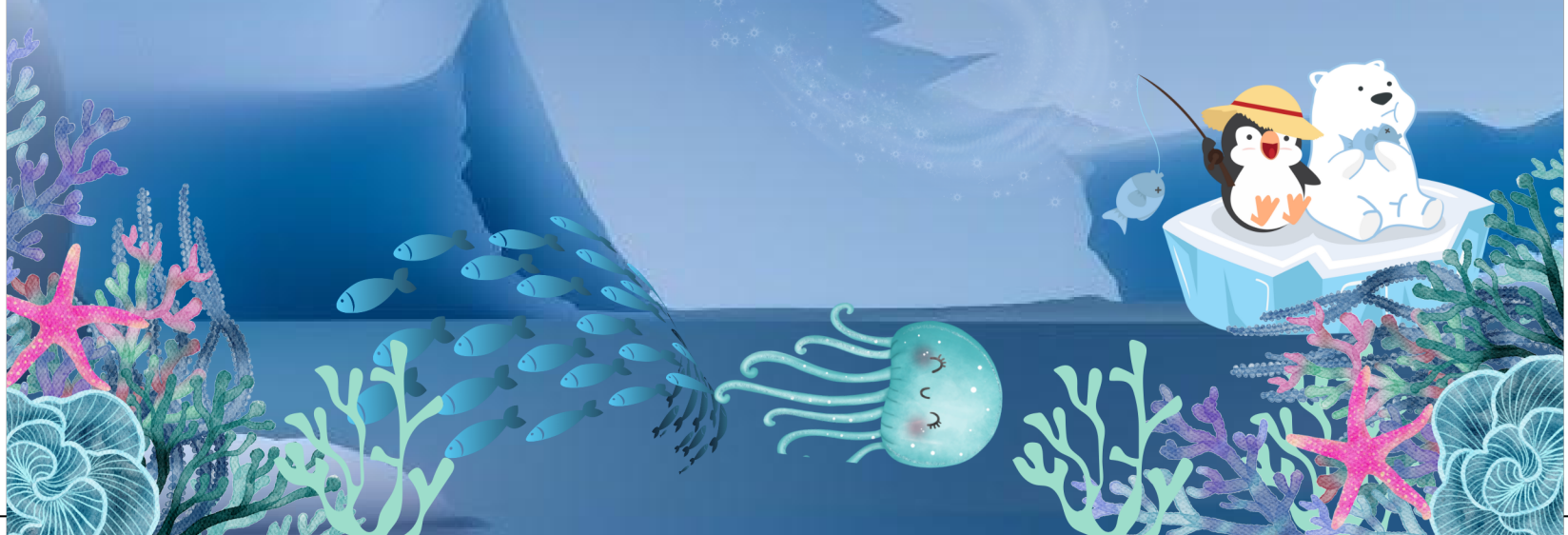




O is for Octopus. The octopus has Eight Tentacles and a VERY big head with BIG eyes.



P is for Penguin. A penguin is a bird that does not fly. This penguin lives on the ice. It has wet orange feet and a long beak.





R is for Rabbit. Sometimes we call Rabbits as Bunnies. This rabbit is brown with very long ears. Rabbits love to eat grass and love to eat carrots.



Q is for Quill. Quills are very long and sharp and protect animals like this from danger.



S is for Snail. Slippery Slimy Snails. Did you know that the shell on its back is its house?



T is for Tiger. The tiger is the biggest cat that lives in the jungle. Look at the tigers coat. It's orange with black stripes.



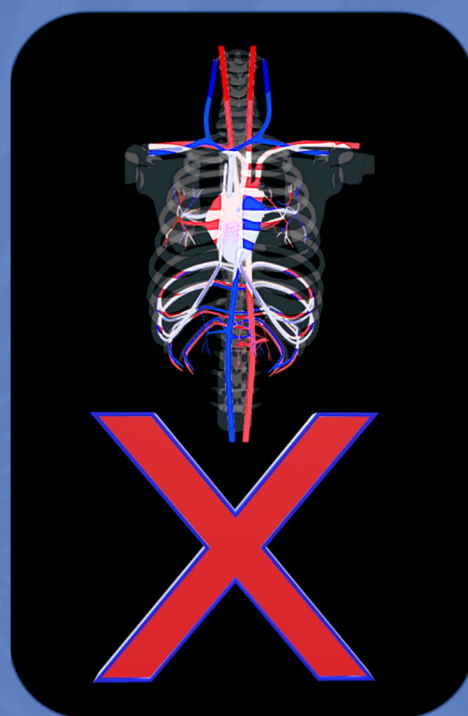


V is for Van. The van is on the road. The van has big black wheels. I wonder what city the van is going to?



U is for Umbrella. The umbrella is black. The umbrella protects us from the rain.





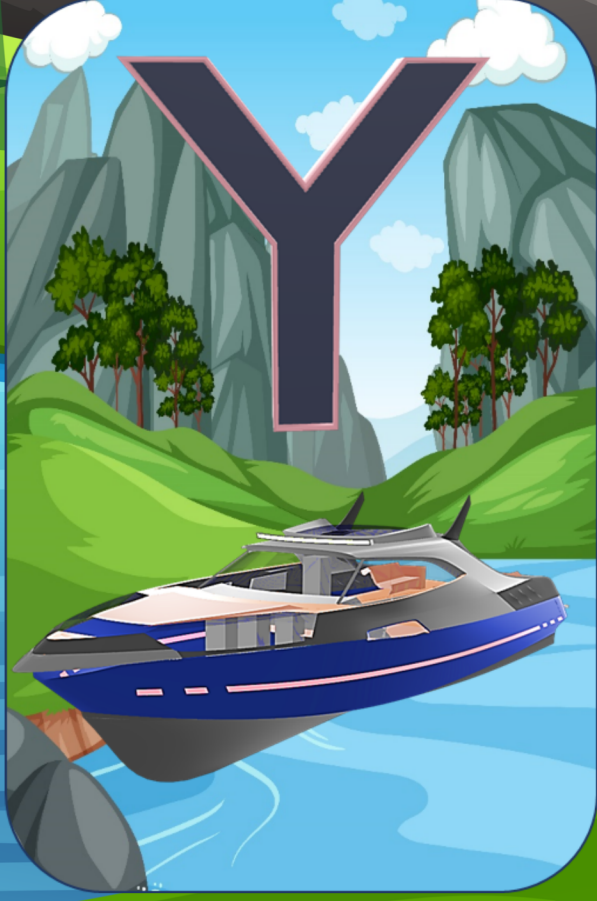
X is for X-Ray. X-rays take photos of our bones. X-rays are found in hospitals.

W is for Watch. The watch tells us the time. The watch has a Big hand and a Little hand. Can you tell what time it is?



Z

Z is for Zombie. And look how scary this zombie is with the green skin and the big bulgy orange eyes. But he can't see.



Y is for Yacht. The Yacht is Blue. The Yacht sails on water. Have you been on a yacht before?



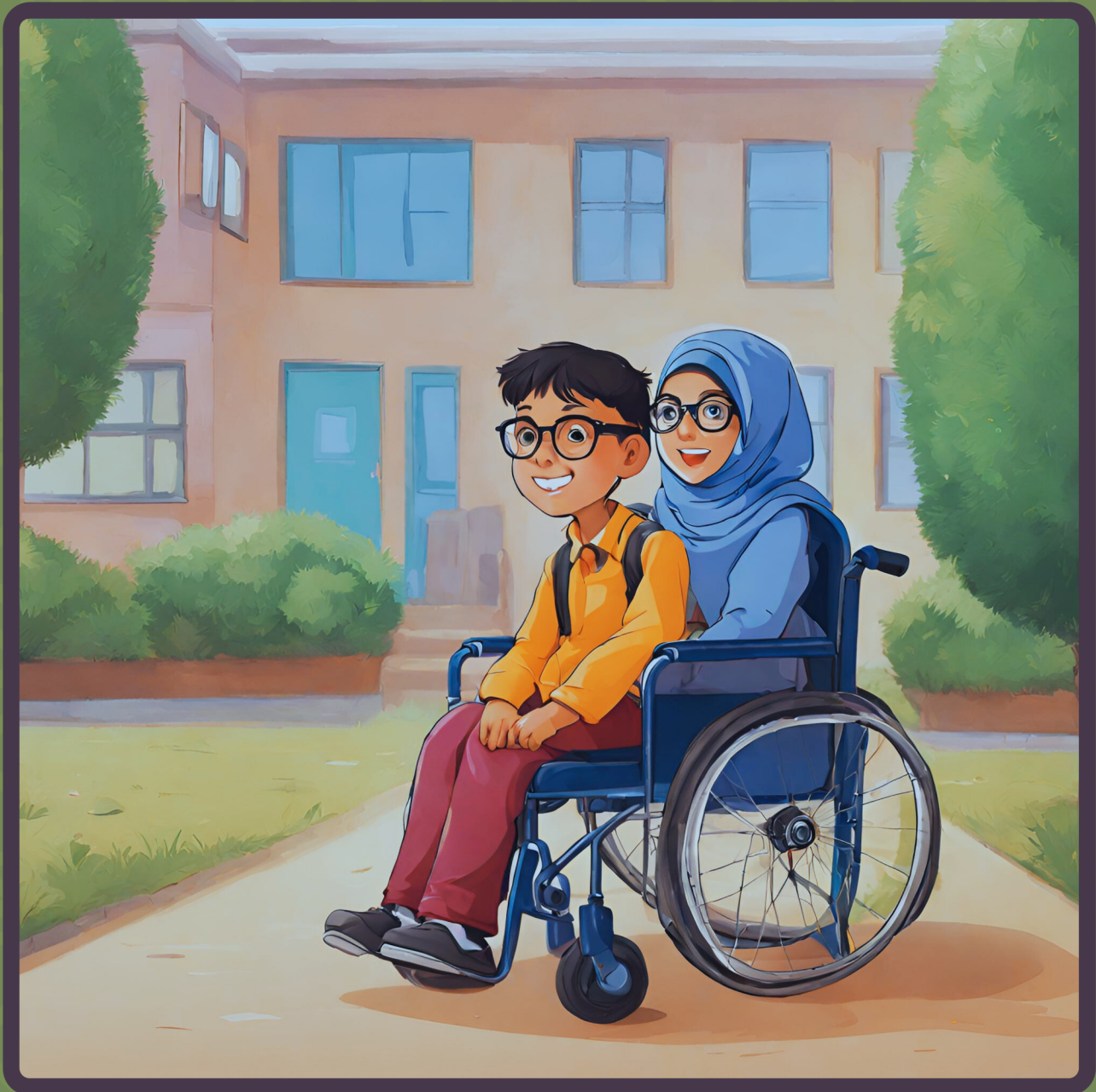
Wash Your Hands Wisely

Save
WATER



Pou Whenua Rangimarie





Amir and Amina and Their Epic Adventure to School

A short story by
Madool Mara

Amir and Amina's Epic School Adventure.

Amir and Amina, a brother and sister bursting with excitement, were eager to return to school after the Eid al-Fitr holiday. Amir had a hearing impairment, and Amina used a wheelchair, but that didn't hold these thrill seekers back.



Their journeys to school were no ordinary trips; they were adventures, thanks to their augmented reality tools. Amina's wheelchair and Amir's glasses transformed their world into a wonderland. The dull streets became a vibrant playground as Amina's wheelchair glided along, and sparkling animations filled their path.

They met Augi, a helpful digital friend on Amir's glasses, who guided them safely through the park to school. The park was a thrilling stop, with swings turning into colourful birds and laughter ringing out from squirrels and ants, thanks to Amir's glasses.

The mystery forest was their next destination, where talking trees praised the Creator and playful animals brought joy and fruit to eat. Learning was part of their journey, as Augi shared interesting facts and challenges. Augi reminded everyone in the forest that as we live by knowledge, we live by adventures, too.

The highlight was the bridge turning into a grand castle, and Amina's wheelchair became a royal chariot. As a knight, Amir faced animated dragons and solved riddles from a friendly troll.

At school, they headed straight to the classroom with inclusive technology. Their day was filled with fun and learning, and Amir's glasses helped him communicate with new friends.

After school, their journey continued as the streets became a playground full of laughter and friends.



With Amir and Amina's imagination and technology skills, any challenge can become an adventure. Their abilities were integral to their incredible journey, enriching their lives and those around them.



"Harmony and Aspirations of The Fatimah Foundations and Pou Whenua Rangimarie"

The Fatimah Foundation commissioned Te Pou Whenua k̄ari and brought together the (dis)Ability of rangatahi Māori to work on our Augmented Reality innovation. It was essential to harmonize all four components of this initiative - Tangata Whenua, the Disability Community, Rangatahi, and The Fatimah Foundation's core values and principles.

Pou Whenua Rangimarie (Pillar of Peace) cradles the emblem of The Fatimah Foundation, embodying the organization's digital ambitions, core mission, and overarching vision. We encourage everyone to cultivate a respectful relationship with the natural environment and recognize the interconnection between the physical and spiritual dimensions in Aotearoa.

In embracing this unity, our goal is to pave the way for a future where inclusion and belonging thrive in harmony with the environment, reflecting the timeless legacies of Aotearoa, New Zealand's cultural and religious diversity, including te āo Māori and Muslim traditions, throughout the ages.



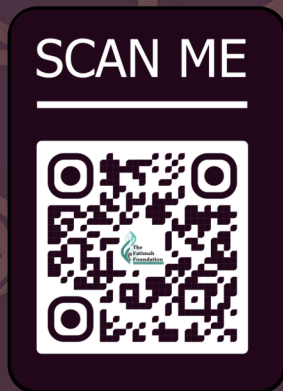
ACKNOWLEDGMENTS

- ANAM Research & Development Solutions
- Disability Community
- Community Leaders Educators
- Muslim Community for their Advice
- Kuia Kaumātua - Cultural Support
- Mahdi Mousavi - Youth Graphic Assistant
- Mangere Ōtāhuhu Local Board
- Mikey Beban - Voice-Over Artist
- Ministry of Social Development
- Ngā Tamariki - Feedback
- Phineas Reid - Artist of Pou Whenua Rangimarie

The Fatimah Foundation Team

Kāore te kumara e kōrero ana mo tōna ake reka.

The kumara does not brag about its own sweetness.



The Fatimah Foundation

Wāhitau - 6, 115 Church Street, Otāhuhu, Auckland 1062

Waea Pukoro - 800 222 432

Imera - info@fatimahfoundation.org.nz

Pae tukutuku - www.fatimahfoundation.org.nz

Reg. Charity CC 42842

